

# MONTHLY MEMBERSHIP PROGRESS REPORT

District 317 D

Results as of: 4/30/2024

GMT:

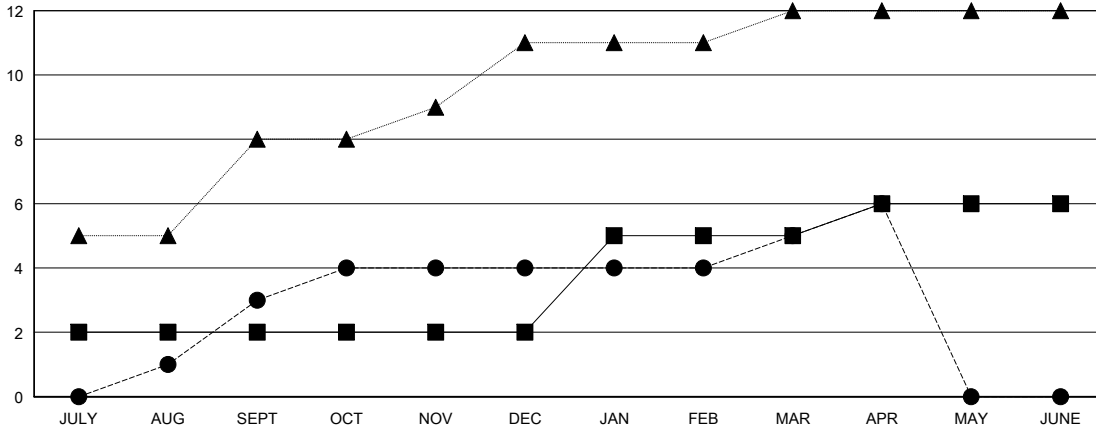
LOCATION INDIA

GMT CA

Clubs			
RESULTS FOR 2023-2024			
QUARTER	NEW CLUB GOAL	NEW CLUBS	DROPPED CLUBS
JULY/AUG/SEPT	2	3	2
OCT/NOV/DEC	0	1	4
JAN/FEB/MAR	3	1	0
APR/MAY/JUNE	1	1	0

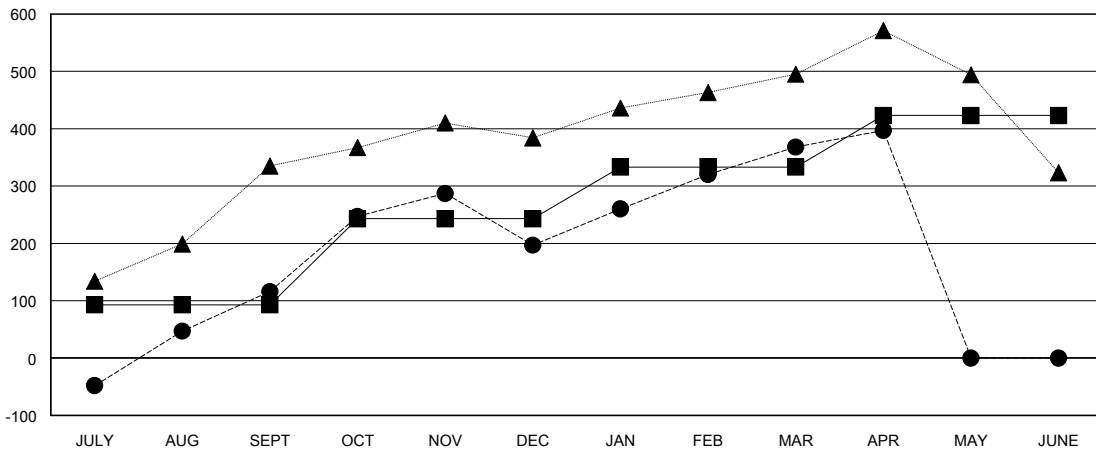
Members			
RESULTS FOR 2023-2024			
QUARTER	MEMBER GROWTH NET GOAL	MEMBER GROWTH ACTUAL	DROPPED MEMBERS ACTUAL (including transfers)
JULY/AUG/SEPT	93	266	136
OCT/NOV/DEC	150	304	209
JAN/FEB/MAR	90	186	9
APR/MAY/JUNE	90	31	2

GOALS AND ACTUAL NEW CLUBS CUMULATIVE



- - CURRENT YEAR GOALS FOR NEW CLUBS
- - CURRENT YEAR ACTUAL NEW CLUBS
- ▲ - LAST YEAR ACTUAL NEW CLUBS

GOALS AND ACTUAL MEMBERS CUMULATIVE



- - MEMBER GROWTH NET GOAL
- - MEMBER GROWTH ACTUAL
- ▲ - LAST YEAR MEMBERSHIP ACTUAL

<b>DROPPED CLUBS: 6</b>	95 CLUBS OF 125 ADDED 1 OR MORE NEW MEMBERS	<b>GENDER DISTRIBUTION</b>	
		MALE 3,528 (74.46%)	FEMALE 1,210 (25.54%)
<b>DROPPED MEMBERS</b>		<a href="#">CLICK HERE FOR CUMULATIVE MEMBERSHIP DATA</a>	TOTAL FAMILY UNIT MEMBERS 1,788
DECEASED 6	CLUB CANCELLED 72		FAMILY MEMBERS PAYING HALF DUES 921
OTHER 278	TOTAL 356		